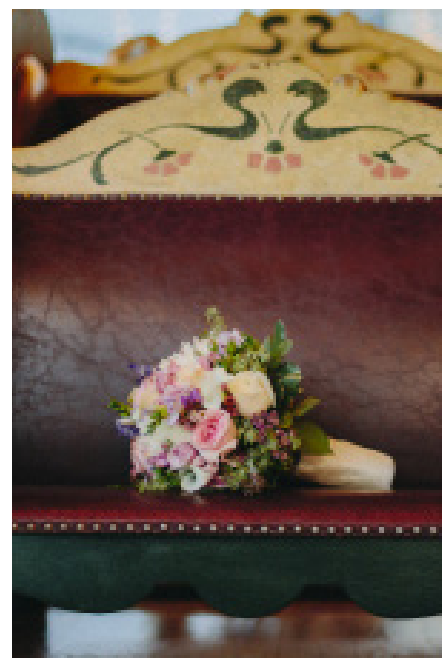




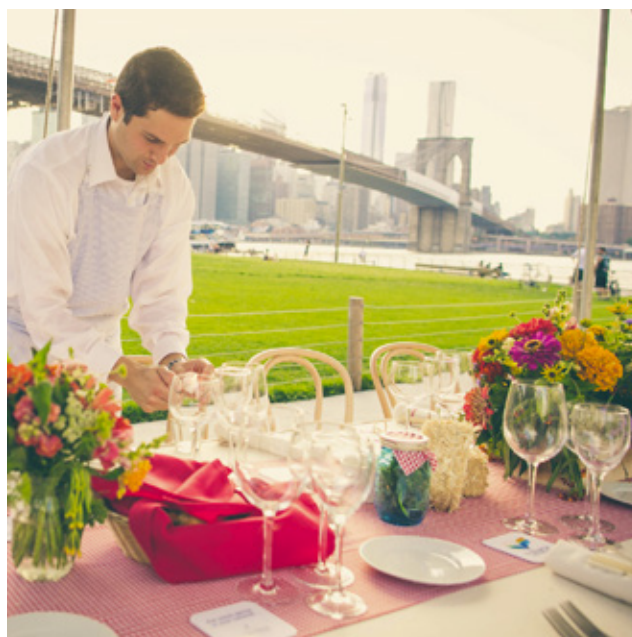
Wedding Receptions

AT JANE'S CAROUSEL



Available (on days or hours) when the Carousel is Closed to the Public

2019



Jane's Carousel, nestled between the Brooklyn and Manhattan Bridges in the DUMBO area of Brooklyn Bridge Park is a perfect romantic venue for wedding receptions.

Wedding Receptions may take place when the Carousel is closed to the public. (Please see our summer and winter schedules). The venue is totally yours for the duration of the party and can accommodate as many as 200 guests. The stunning glassy pavilion with the 48 horse Carousel will accommodate your guests year round. In good weather our beautiful deck, overlooking the East River, the Brooklyn and Manhattan bridges and the Manhattan skyline will be available to extend your party space. Parties in the pavilion and on the deck and can be planned as standing or seated events. Unlimited Carousel rides will be available throughout the party. Fabulous celebrations at Jane's Carousel will be memorable occasions for all.

Food, Entertainment & Catering can be as simple or elaborate as you wish. You are welcome to hire an outside caterer or bring in fun food trucks or carts. There are no kitchen facilities in the Carousel pavilion. We provide four (30"x96") banquet tables, four 8 foot portable benches and coat racks with hangers. Linens are not provided. Additional party rentals, furniture and even tenting are permitted with the approval of Jane's Carousel. A representative from the party must be onsite to receive and return rental and catering deliveries. Jane's Carousel staff is not responsible for the coordination, set up or clean up of your party. A professional on site Event Coordinator will be required. Decorations and entertainment are welcome but must be approved at least two weeks prior to the party. Personal music can be played on the Carousel's built in sound system. You are also welcome to bring in live music or a DJ of your choice, however, microphones and amplified music are not permitted outside on the Carousel deck.

The Carousel offers an amazing and magical setting for a fabulous Wedding celebration.

A walk through appointment of the Carousel Pavilion is recommended to visualize the occasion in advance.



The Carousel Pavilion has been designed to accommodate beautiful celebrations. Doors on the north and south facades fully open out to the deck to allow for breezy ventilation. Huge 10' diameter ceiling fans in the four corners provide additional cooling. In the winter months the pavilion is fully heated and very comfortable and cozy. The Carousel has ample electrical capacity with 400 total AMPS in the building. The power provided is 3-phase, 220 volts. The built in sound system, Carousel lights and subtle perimeter LED lighting will add to the ambiance of the party. Jane's Carousel is truly a one-of-a kind space for a memorable affair!

The Cost of Wedding Receptions is priced by the hour and number of guests.

Up to 100 guests \$1,000 per hour

Up to 150 guests \$1,500 per hour

Up to 200 guests \$2,000 per hour.

** Set-up and clean up are billed at the same rate.*

** A staff manager and Carousel operator will be on site and available for the duration of the party.*

** Rate could be more, depending on the scope of the event.*

** 2019 Prices subject to change*



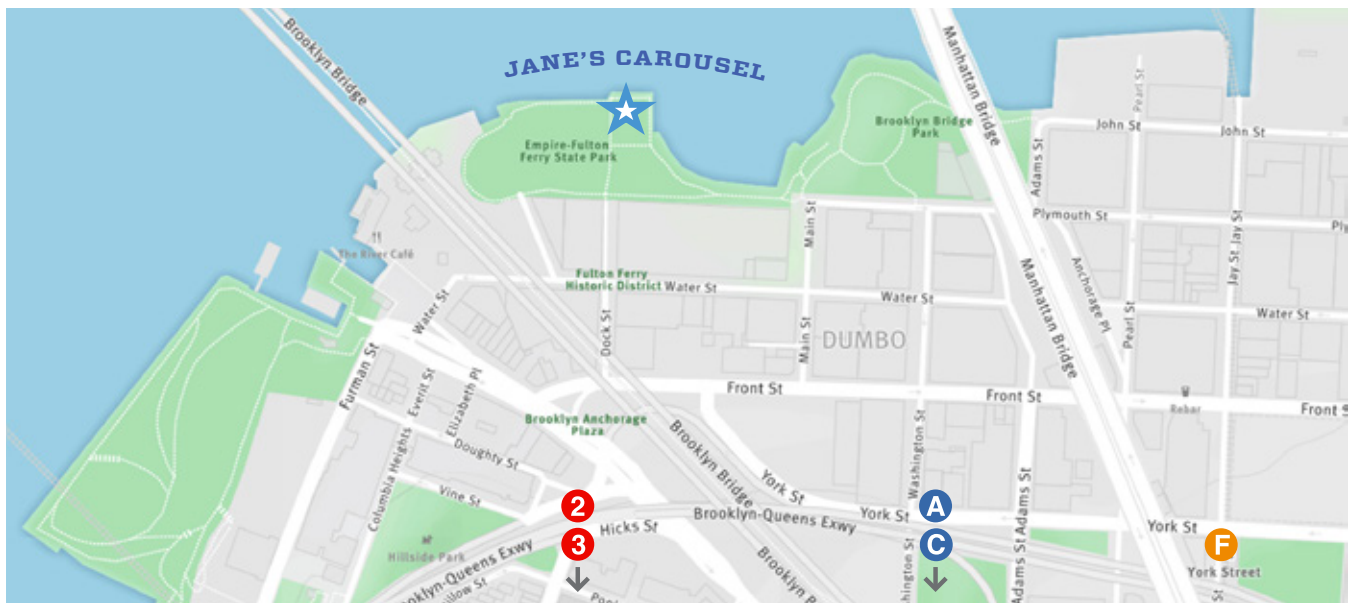
Other Important Information. There are no restrooms in the Carousel Pavilion however there are restrooms nearby in Brooklyn Bridge Park. Portable restrooms cannot be accommodated. There is no vehicle access to the Carousel. There is parking available in nearby parking garages as well as some limited street parking. The closest intersection for drop-offs is Water Street at Dock Street. All Carousel rules, as posted in the Pavilion, as well as all Brooklyn Bridge Park rules must be obeyed. Open flames are not permitted in the Pavilion or Brooklyn Bridge Park. BBQ's, and open flame grills as well as fireworks and sparklers are not permitted in the Pavilion or in Brooklyn Bridge Park. Helium balloons cannot be permitted in the Pavilion. (If let loose, helium balloon strings can become tangled and damage the Carousel gears.)

Photo Credits

Page 1: Bride on Horse: Pat Furey; Bouquet: The Wedding Central; Bride and Groom: Chloe Peter; C&P Photography; Dinner Table on Deck: Erica Camille
Page 2: Waiter: Erica Camille, Carousel at Night: Erica Camille
Page 3: Table and Carousel: Occasion 9;
Couple with Balloons: Unique Lapin photography

For Booking Inquiries:

katie@janescarousel.org (718) 222-2502



Jane's Carousel is located in the DUMBO section of Brooklyn Bridge Park, on the East River, between the Brooklyn and Manhattan Bridges. The Carousel is easily accessed from park entrances at Dock Street or Main Street.

By Subway

- F F Train to York Street** Make a right when exiting the train station. Walk 1 block down Jay Street to Front Street. Turn left, walk 3 blocks to Main Street. Turn right and walk 2 blocks to the park entrance.
- A C A/C to High Street** If you are coming from Manhattan, exit at the rear of the train. Walk downhill on Cadman Plaza West (which becomes Old Fulton Street) to the river. Walk 1 block right on Water Street and left on Dock Street into the Park.
- 2 3 2/3 to Clark Street** Exit the station elevator and make a left onto Henry Street. Walk down Henry Street and turn left on Old Fulton Street. Continue downhill to the river and turn right on Water Street. Walk 1 block to the Park entrance at Dock Street into the Park.

On Foot

If you have time, it's a thrilling walk over the Brooklyn Bridge from lower Manhattan to the Carousel. Take the footpath over the Bridge which exits on to Washington Street. Walk down the hill, toward the river on Washington Street to Front Street. Turn left on Front Street, walk 1 block to Main Street and turn right. Continue 2 blocks on Main Street to the park entrance at the river.

By Ferry

The ferry is a fun way to come to the Carousel. [The East River Ferry Service](#) & [New York Water Taxi](#)

By Car

From Manhattan First exit off the Brooklyn Bridge. Stay right down the exit ramp, to Cadman Plaza West, then curve left on to Old Fulton Street. Continue down Old Fulton St. toward the river and turn right on Front Street. Parking is available on Front Street or the corner of Main & Front Street. Enter the park at either Dock Street or Main Street.

From Brooklyn Take Atlantic Avenue to Boerum Place heading toward the Brooklyn Bridge. Boerum Place becomes Adams Street. Stay in the far left lane and turn left onto Tillary Street. Turn right on to Cadman Plaza West. At the end, turn left on to Old Fulton Street. Continue down Old Fulton St. toward the river and turn right on Front Street.

Parking - Park Kwik Garage

- 37 Front Street (between Dock St & Main Street) 11201
- 45 Main Street (corner of Front & Main Street) 11201
- Adams Street (between Front & Water Street)